

ACCESSIBILITÉ AUX PERSONNES HANDICAPÉES

DIRECTION DEPARTEMENTALE
DES TERRITOIRES



le Contrôle du respect des Règles de Construction

Accès



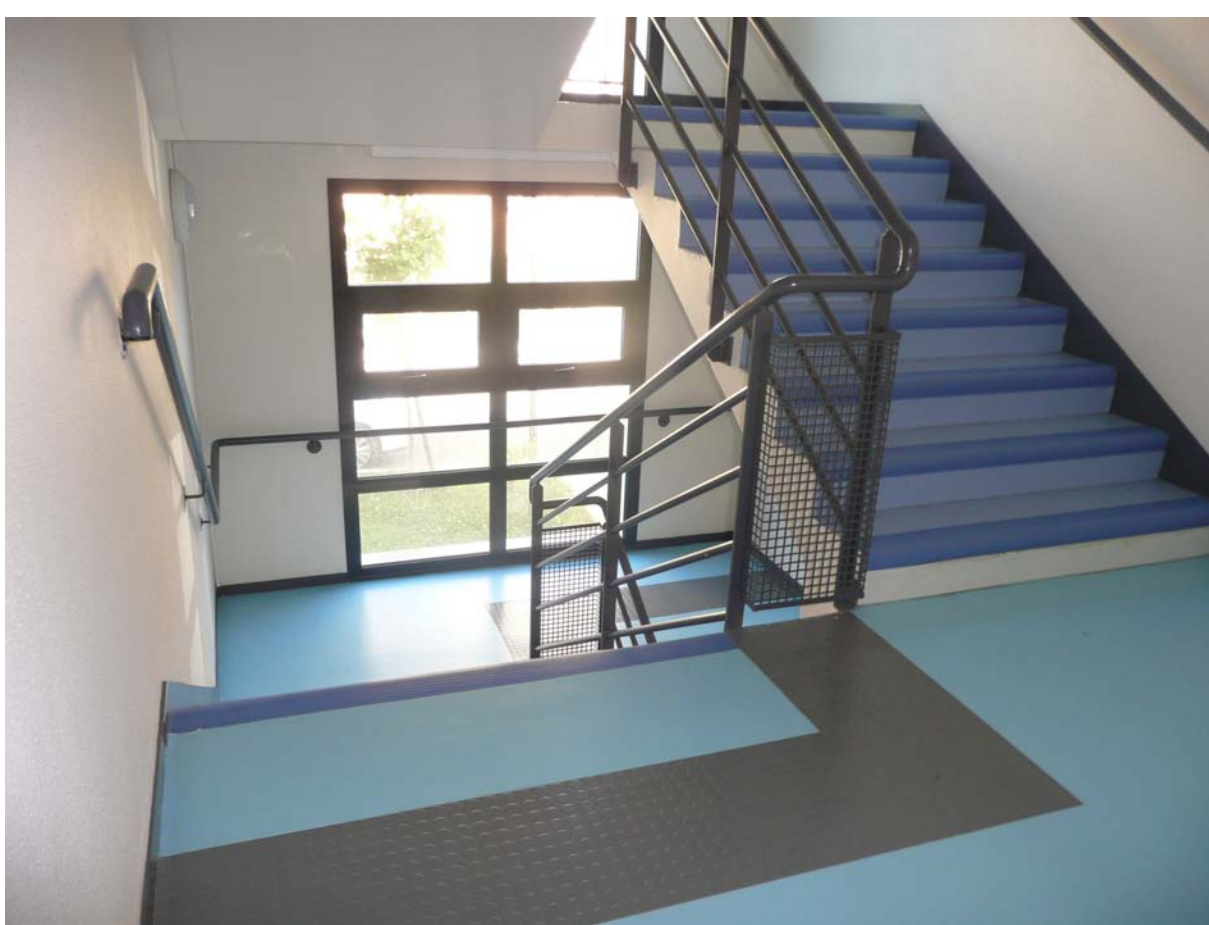
Stationnement



Entrée



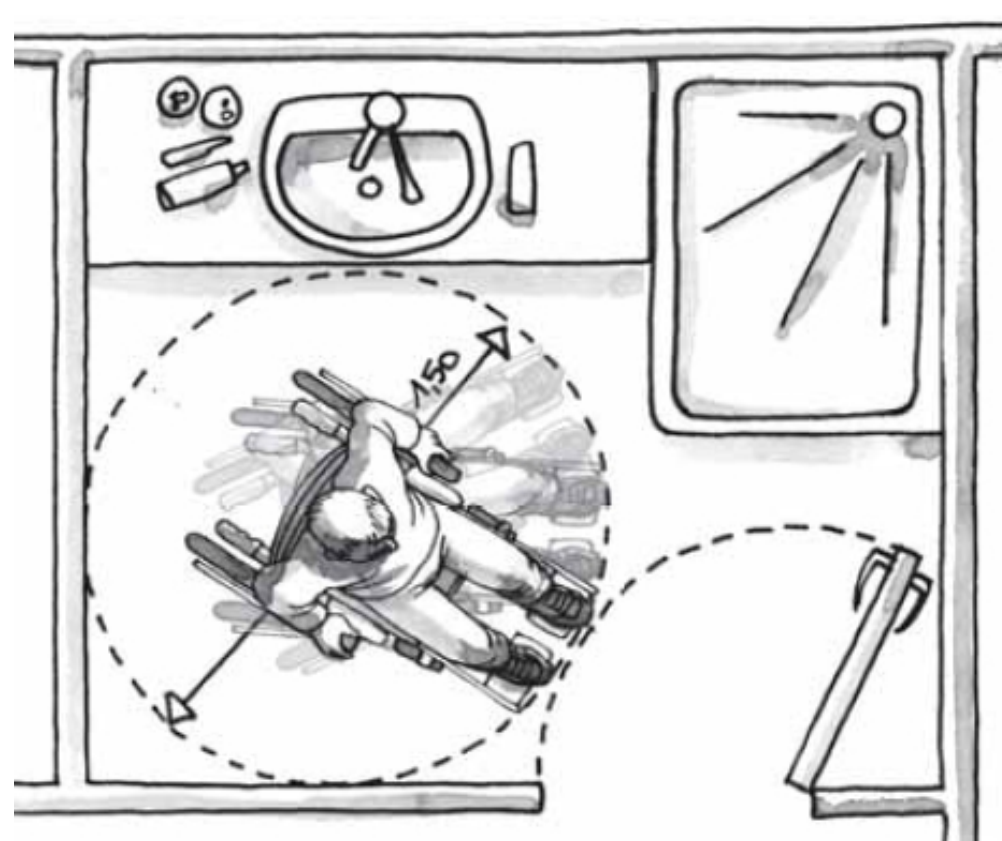
Escaliers communs



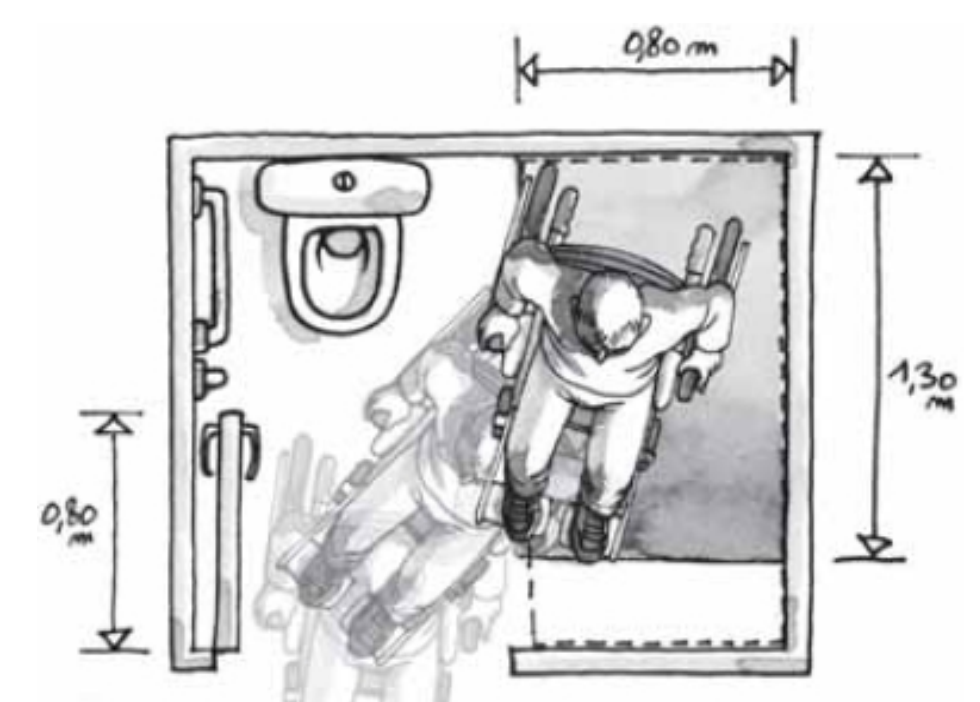
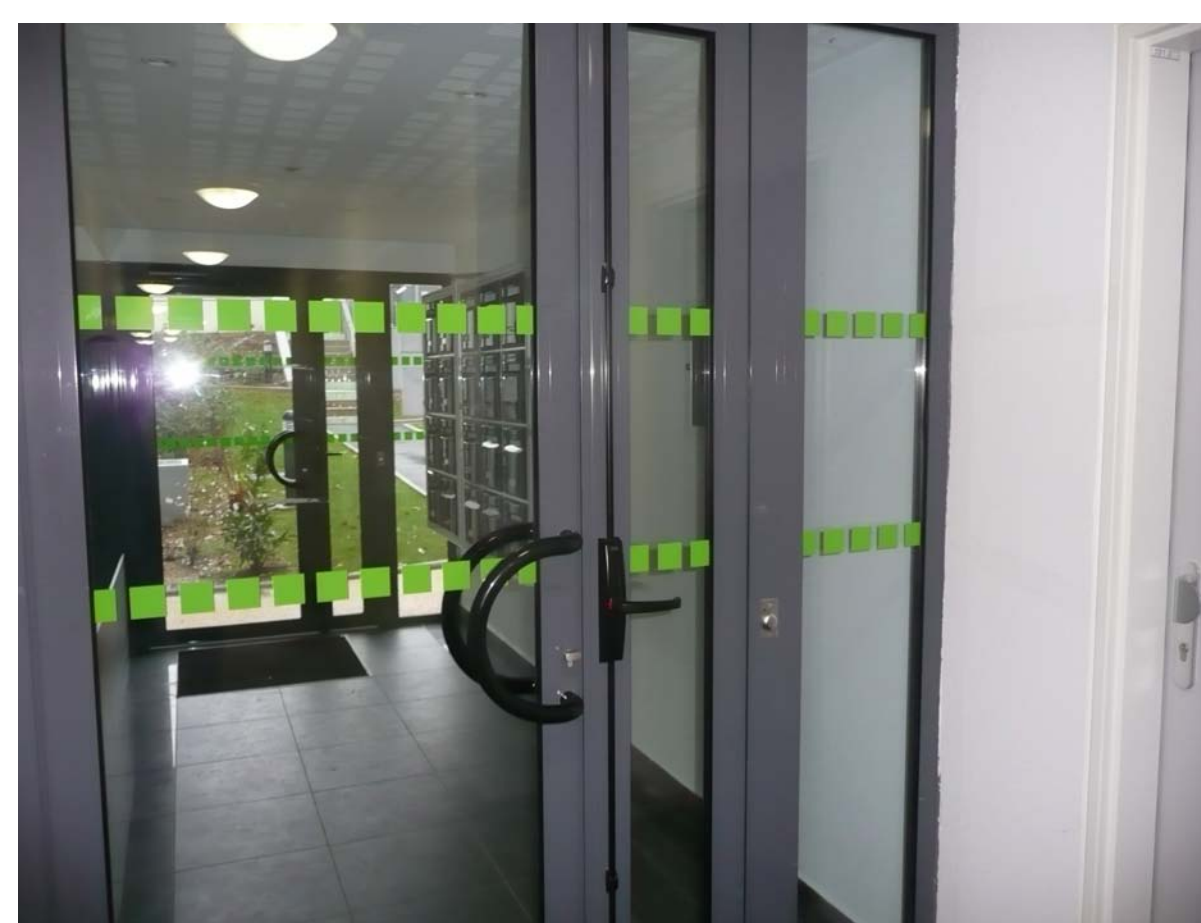
WC



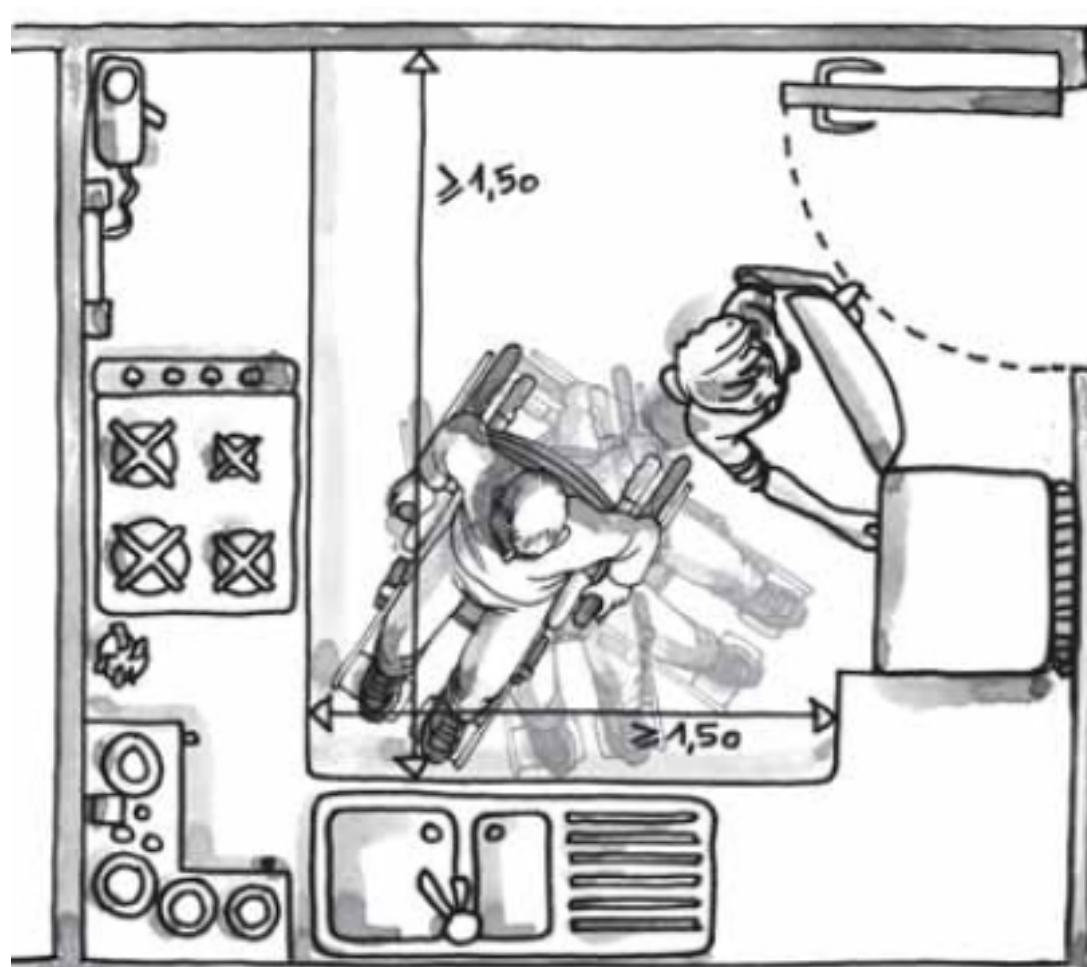
Salle de bain



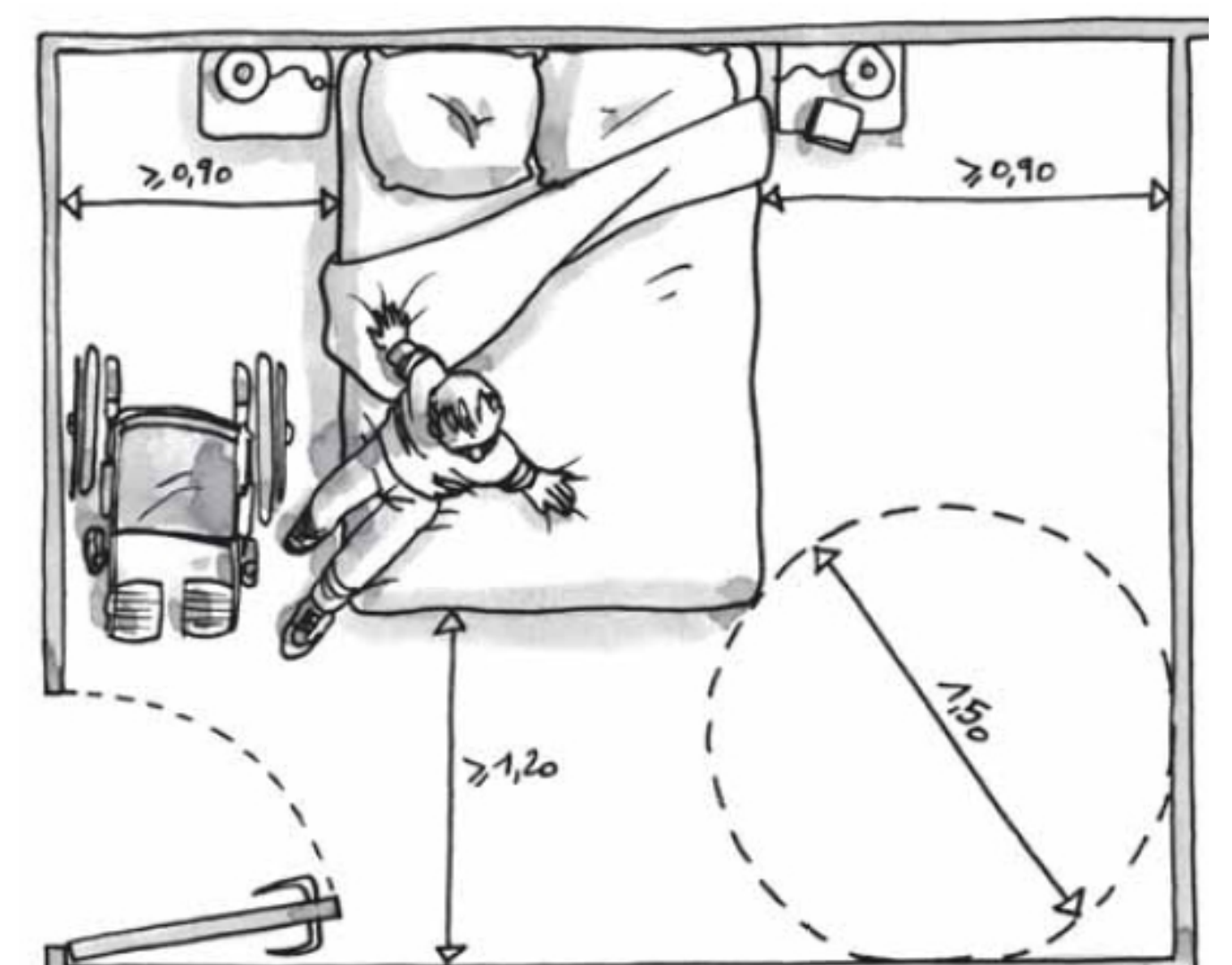
Portes et Sas



Cuisine



Chambre



UN OUTIL AU SERVICE DE LA QUALITÉ DES BÂTIMENTS