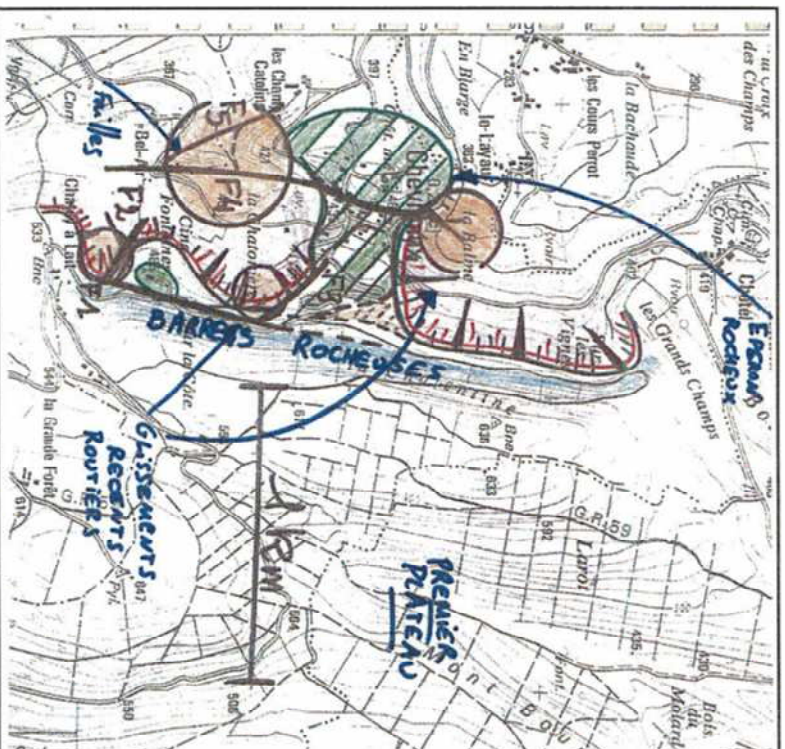


PLAN DE PRÉVENTION DES RISQUES NATURELS PRÉVISIBLES

Risques de mouvements de terrain

CHEVREAU

cartes de zonage réglementaire








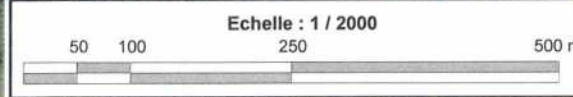
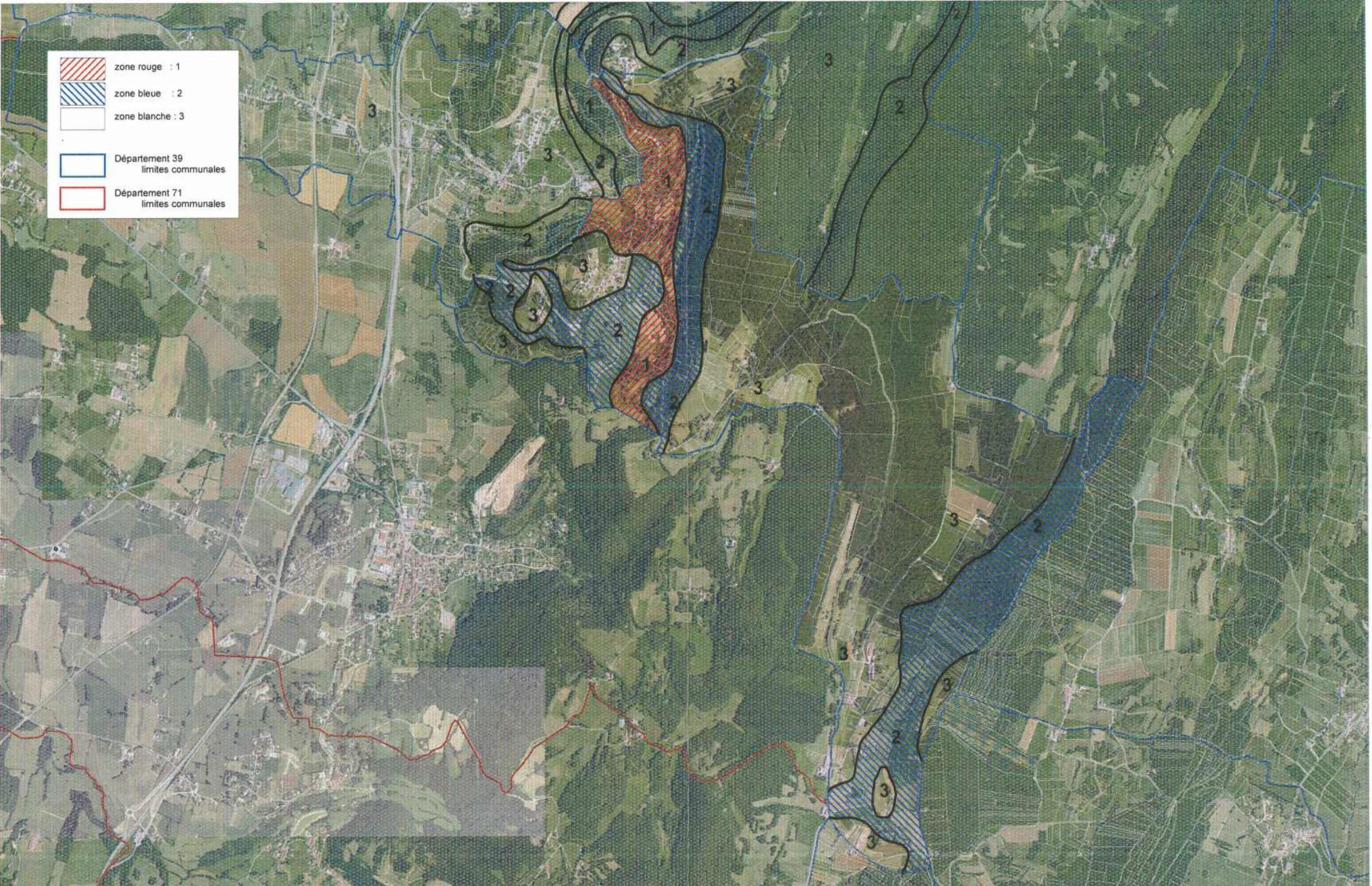
Prescrit le : 18 JANVIER 2008

Mis à l'enquête publique du 12 OCTOBRE 2009 au 13 NOVEMBRE 2009

Approuvé le :

08 FEV. 2010





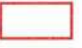
-  zone rouge : 1
-  zone bleue : 2
-  zone blanche : 3
-  Département 39 limites communales
-  Département 71 limites communales

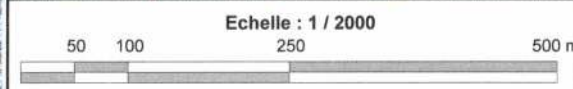
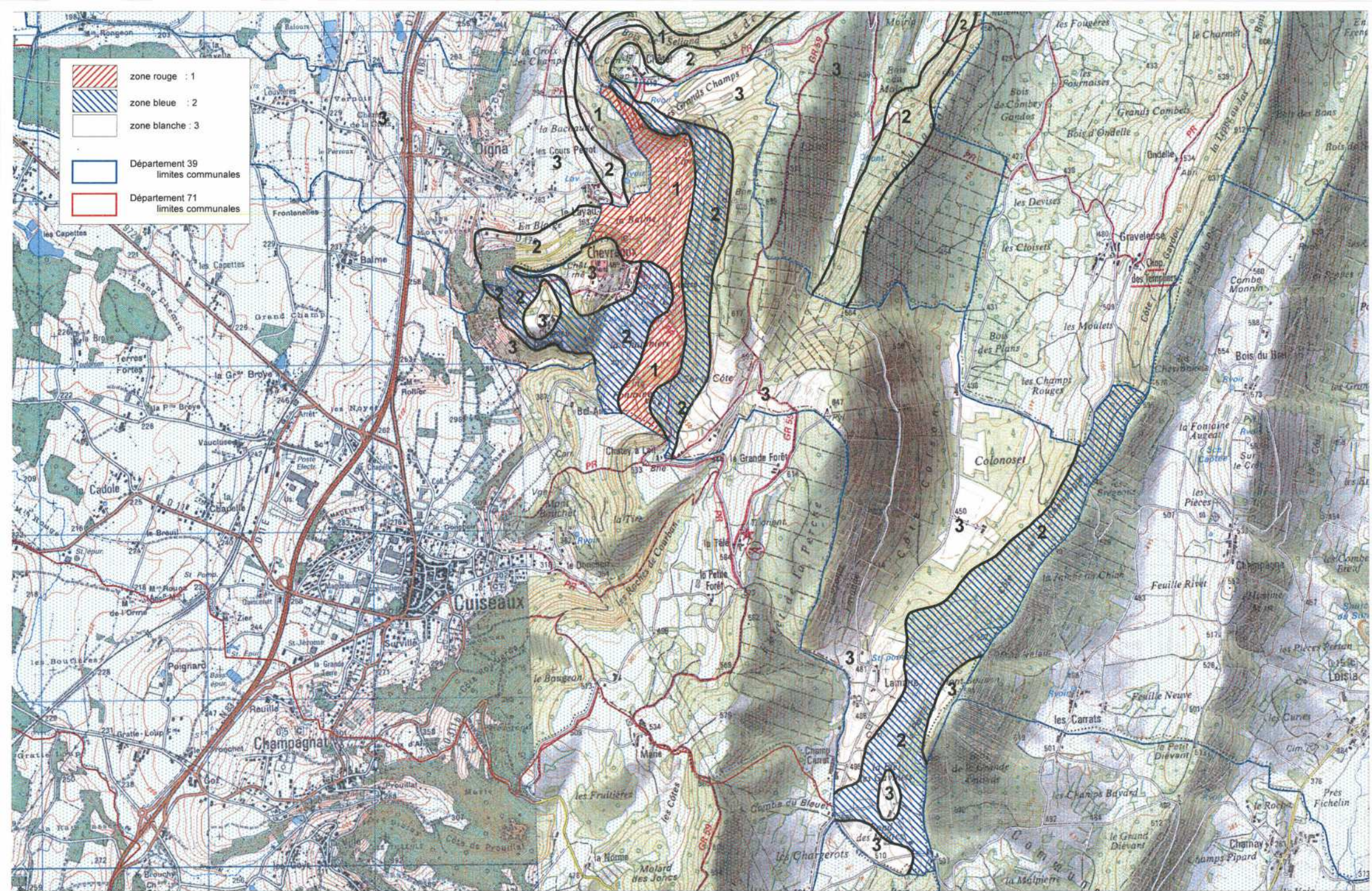


Ministère
de l'Écologie, de l'Énergie,
du Développement durable
et de l'Aménagement
du territoire

PLAN DE PREVENTION DES RISQUES NATURELS MOUVEMENTS DE TERRAIN
CARTE DU ZONAGE REGLEMENTAIRE (Cheveaux)






janvier 2010
05

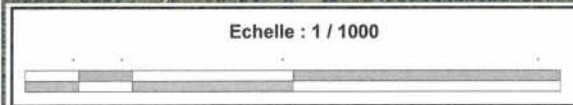
-  zone rouge : 1
-  zone bleue : 2
-  zone blanche : 3
-  Département 39 limites communales
-  Département 71 limites communales



PLAN DE PREVENTION DES RISQUES NATURELS MOUVEMENTS DE TERRAIN
CARTE DU ZONAGE REGLEMENTAIRE (Chevreaux)






janvier 2010
06

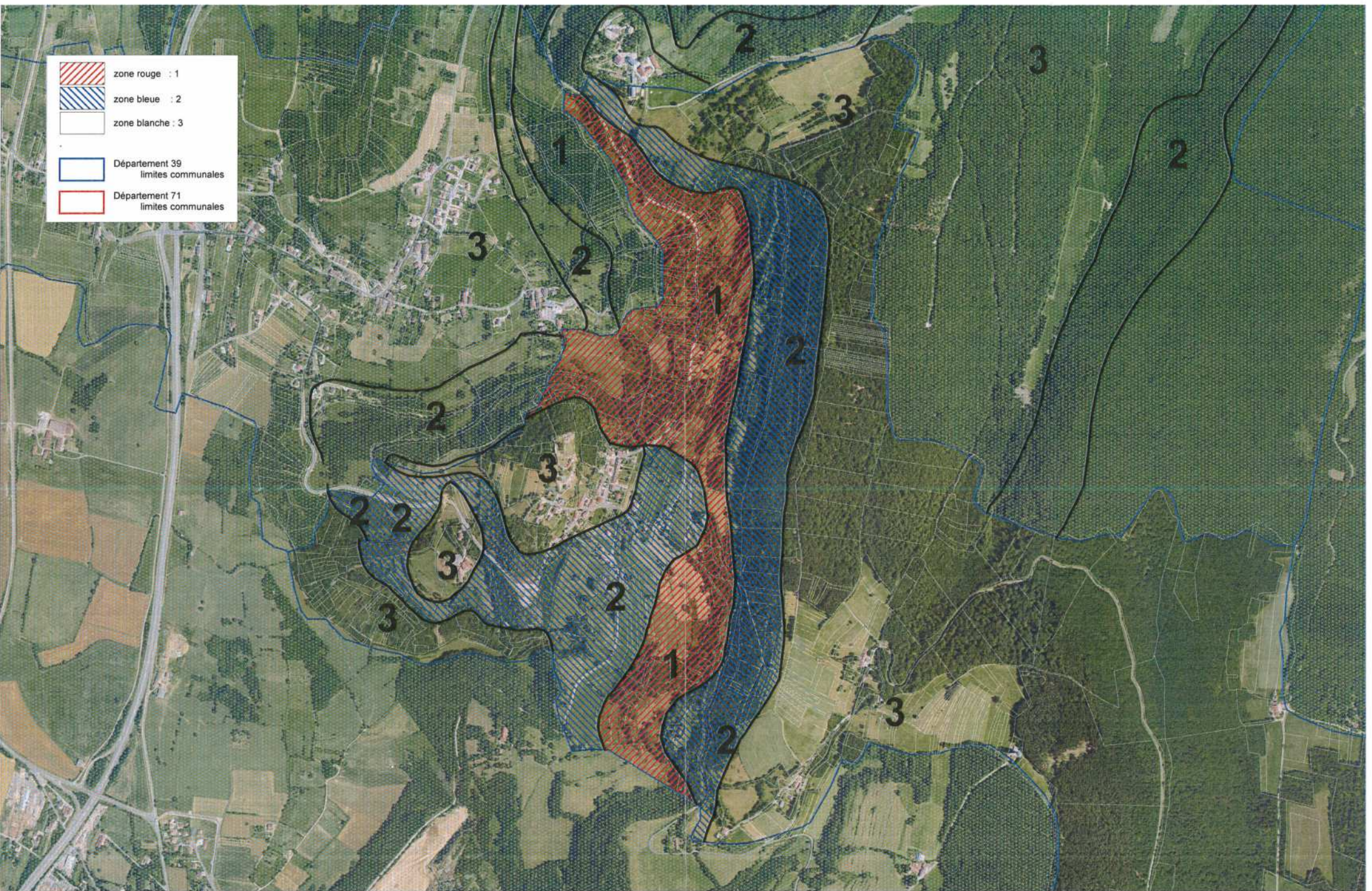
-  zone rouge : 1
-  zone bleue : 2
-  zone blanche : 3
-  Département 39 limites communales
-  Département 71 limites communales



PLAN DE PREVENTION DES RISQUES NATURELS MOUVEMENTS DE TERRAIN
CARTE DU ZONAGE REGLEMENTAIRE (Lamarre)

janvier 2010
07

-  zone rouge : 1
-  zone bleue : 2
-  zone blanche : 3
-  Département 39 limites communales
-  Département 71 limites communales



Echelle : 1 / 1000



PLAN DE PREVENTION DES RISQUES NATURELS MOUVEMENTS DE TERRAIN
CARTE DU ZONAGE REGLEMENTAIRE (Chevreux)

janvier 2010