









-  Lit mineur
-  Section couverte
-  Limite commune
-  RD 678
-  RD
-  Zones urbanisées
-  Equipements sensibles
-  Etablissements sensibles


REVIGNY




Direction  
Départementale  
de l'Équipement  
Jura

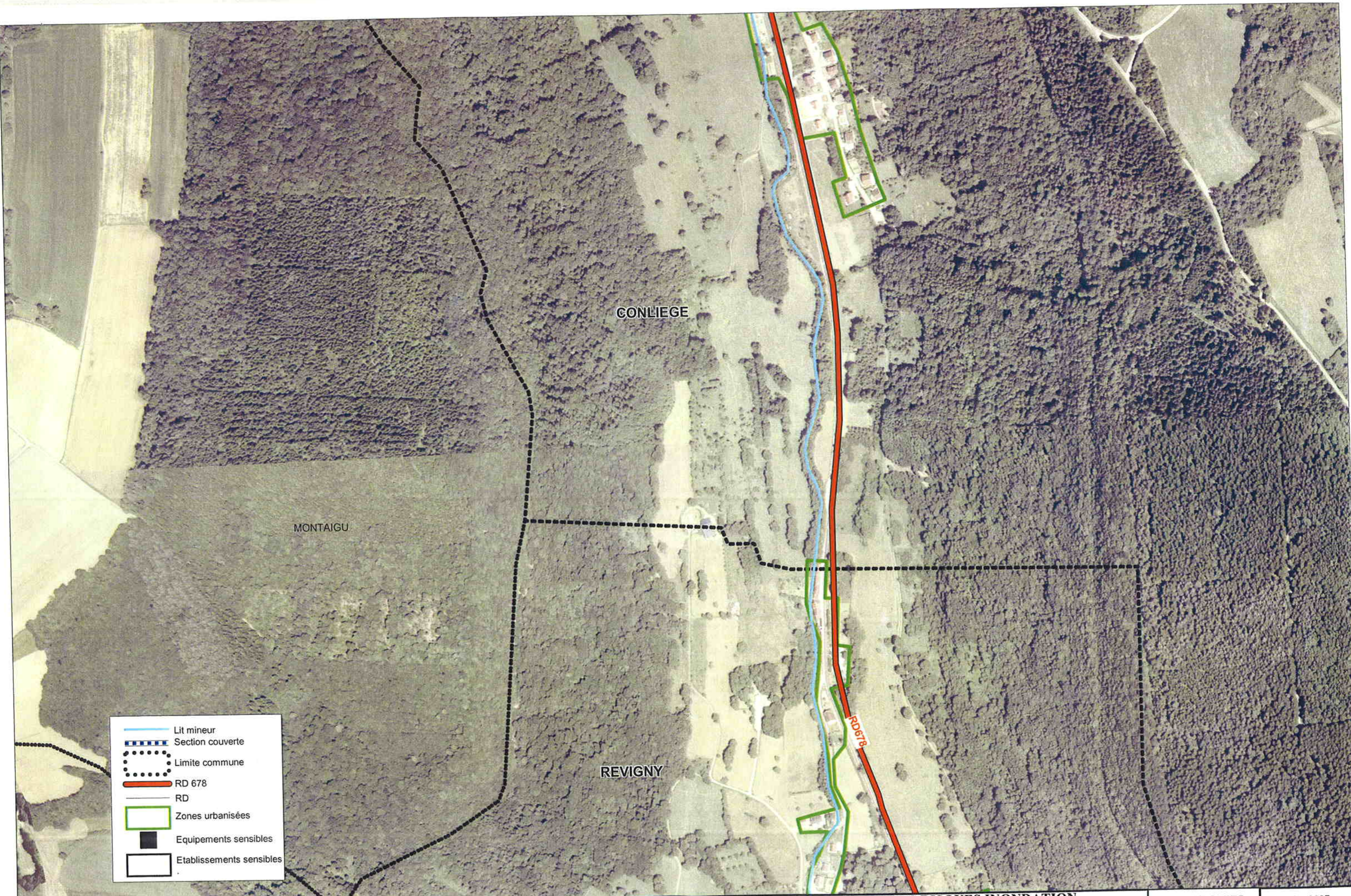
**PLAN DE PREVENTION DES RISQUES INONDATION**  
de La VALLIERE  
**CARTE DES ENJEUX**









**BETURE-CEREC**



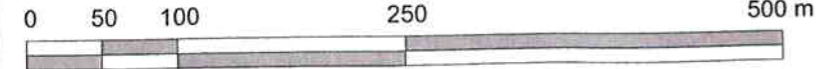
Janvier 2007  
**Planche 01**





-  Lit mineur
-  Section couverte
-  Limite commune
-  RD 678
-  RD
-  Zones urbanisées
-  Equipements sensibles
-  Etablissements sensibles

Echelle : 1 / 5000



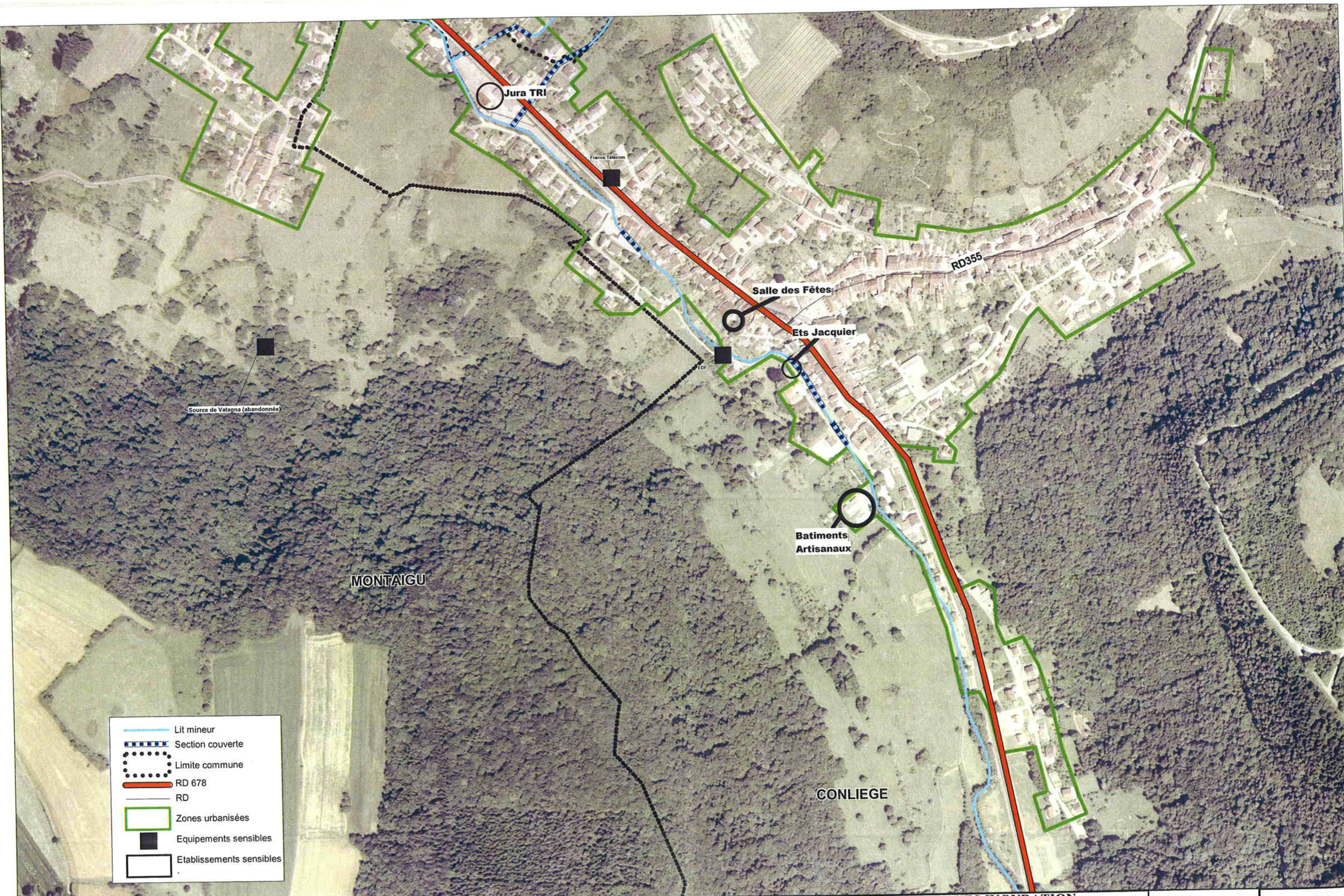
**PLAN DE PREVENTION DES RISQUES INONDATION**  
de La VALLIERE  
**CARTE DES ENJEUX**

**BETURE-CEREC**

Janvier 2007

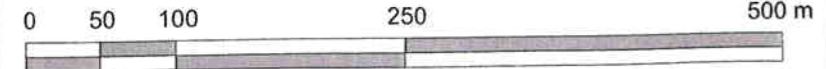
**Planche 02**



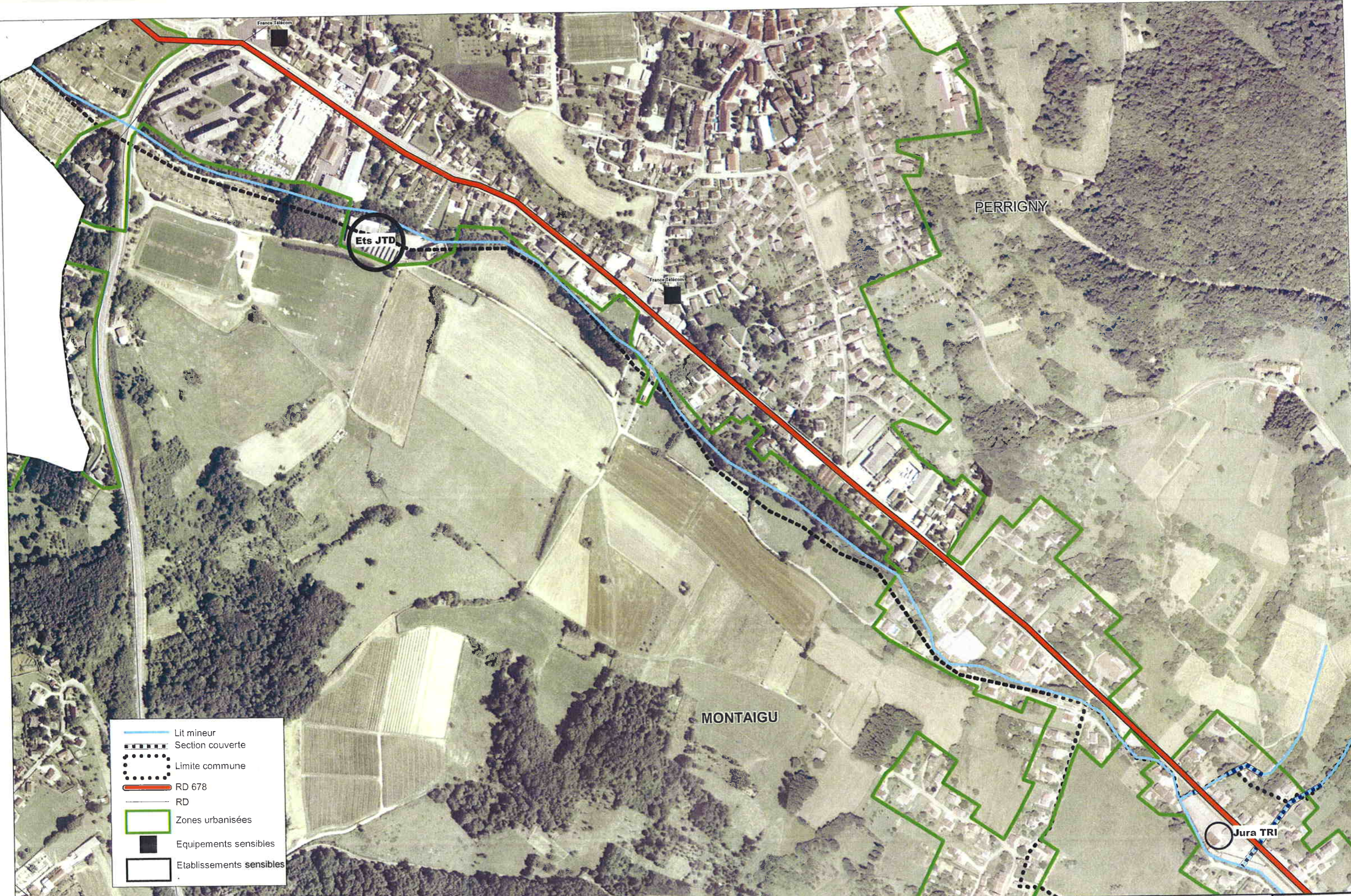


**PLAN DE PREVENTION DES RISQUES INONDATION**  
 de La VALLIERE  
**CARTE DES ENJEUX**

Echelle : 1 / 5000







- Lit mineur
- Section couverte
- Limite commune
- RD 678
- RD
- Zones urbanisées
- Equipements sensibles
- Etablissements sensibles

Echelle : 1 / 5000



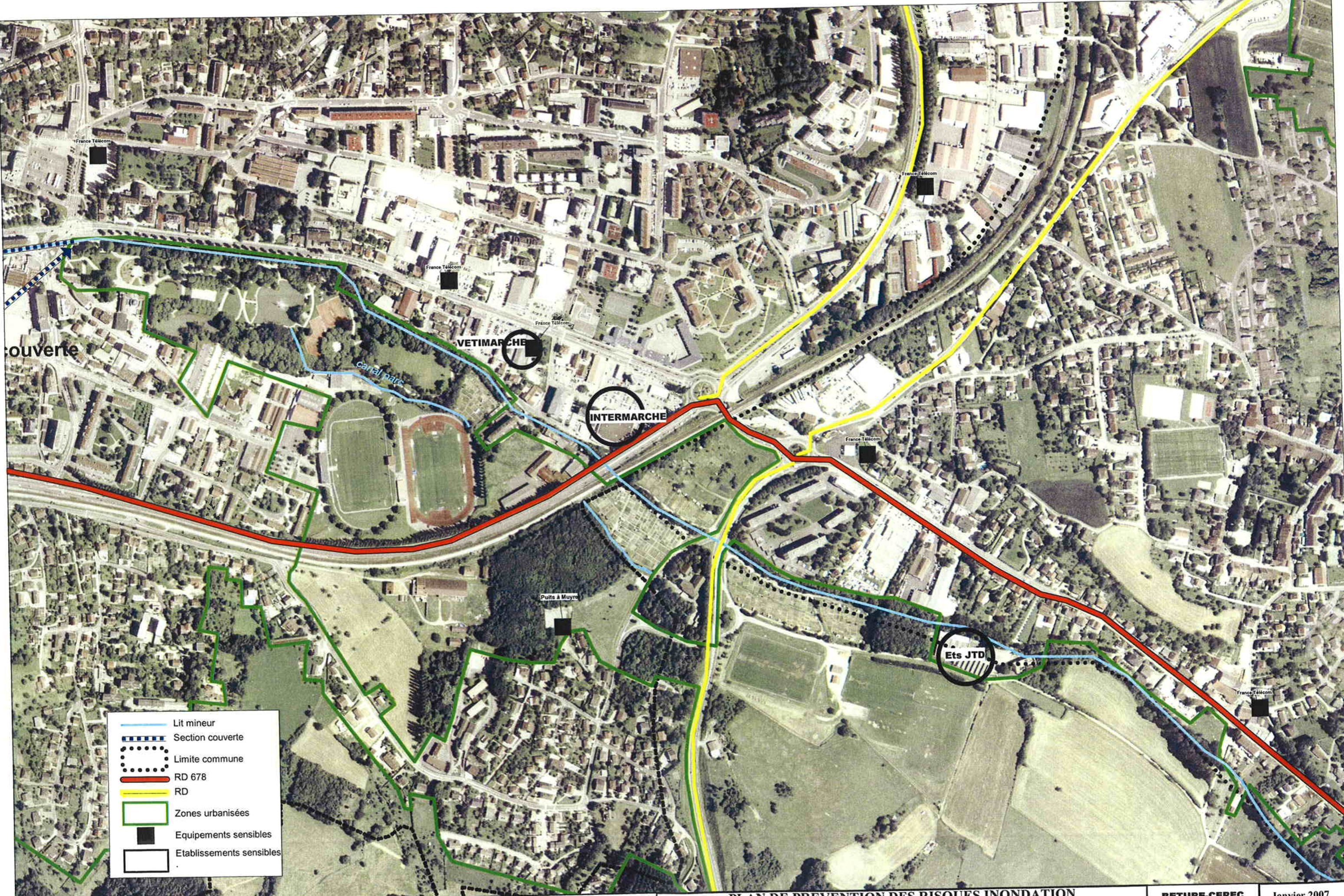
**PLAN DE PREVENTION DES RISQUES INONDATION**  
**de La VALLIERE**  
**CARTE DES ENJEUX**




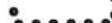




**BETURE-CEREC**

Janvier 2007

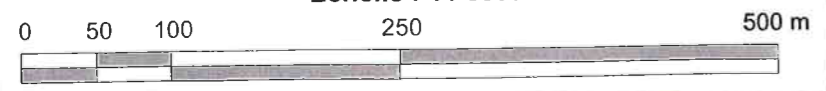
**Planche 04**





-  Lit mineur
-  Section couverte
-  Limite commune
-  RD 678
-  RD
-  Zones urbanisées
-  Equipements sensibles
-  Etablissements sensibles

Echelle : 1 / 5000



**PLAN DE PREVENTION DES RISQUES INONDATION  
de La VALLIERE  
CARTE DES ENJEUX**

**BETURE-CEREC**

Janvier 2007

**Planche 05**



RESIDENCES  
UNIVERSITAIRES

JURA  
TRANSPORTS









JURAPARC

ZONE COMMERCIALE  
+ PARKINGS PUBLICS

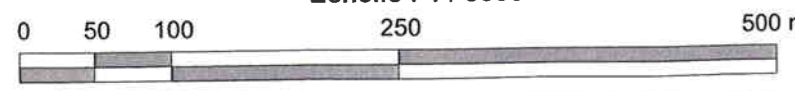
Fin de la partie couverte

Fin de la partie couverte

Debut de la partie couverte

-  Lit mineur
-  Section couverte
-  Limite commune
-  RD 678
-  RD
-  Zones urbanisées
-  Equipements sensibles
-  Etablissements sensibles

Echelle : 1 / 5000



PLAN DE PREVENTION DES RISQUES INONDATION  
de La VALLIERE  
CARTE DES ENJEUX









BETURE-CEREC

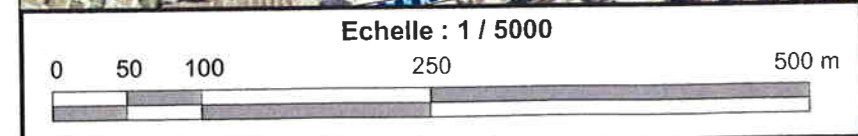
Janvier 2007

Planche 06

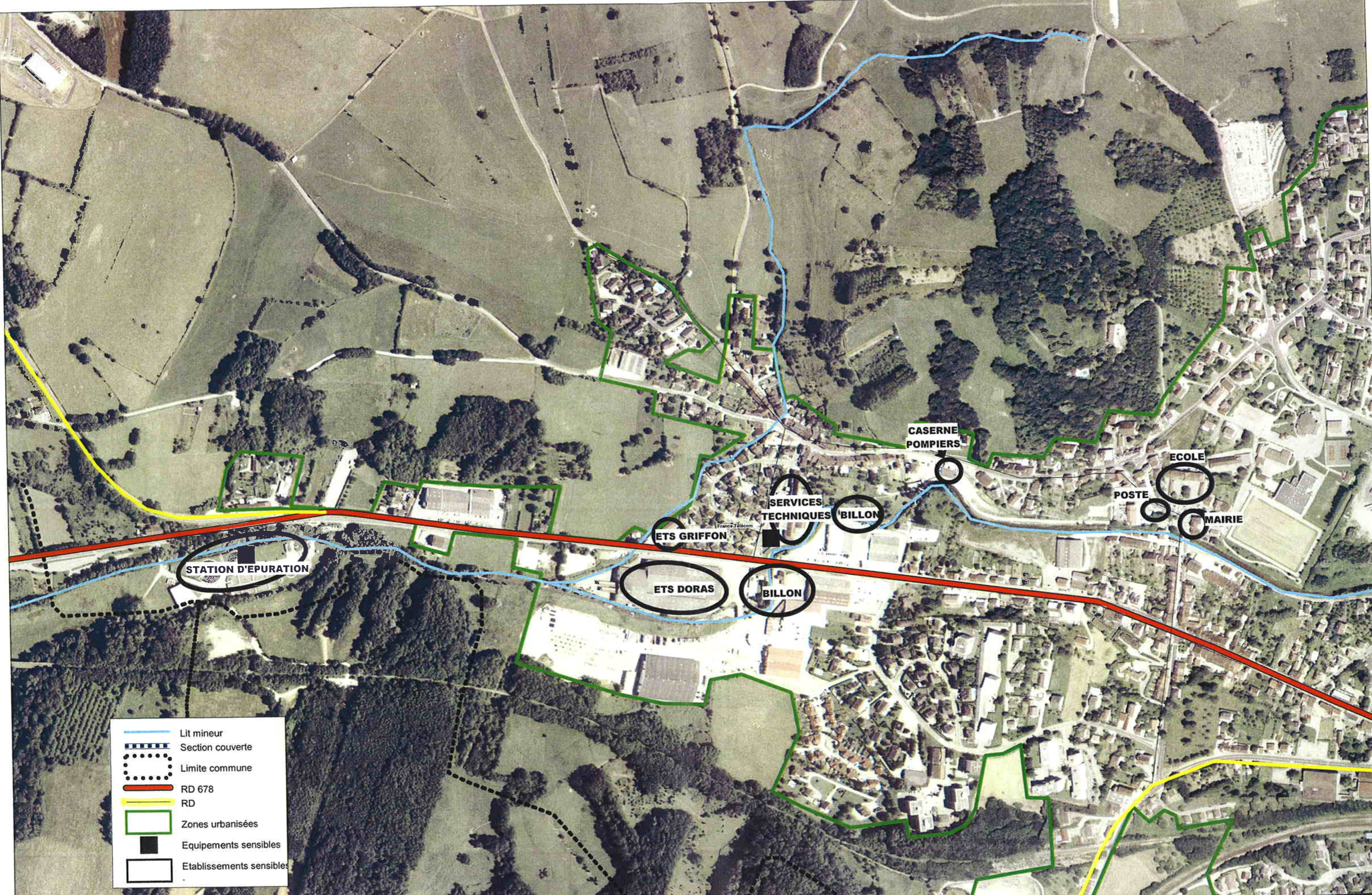




-  Lit mineur
-  Section couverte
-  Limite commune
-  RD 678
-  RD
-  Zones urbanisées
-  Equipements sensibles
-  Etablissements sensibles

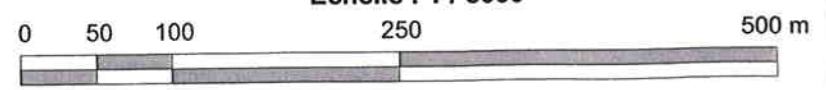






- Lit mineur
- Section couverte
- Limite commune
- RD 678
- RD
- Zones urbanisées
- Equipements sensibles
- Etablissements sensibles

Echelle : 1 / 5000



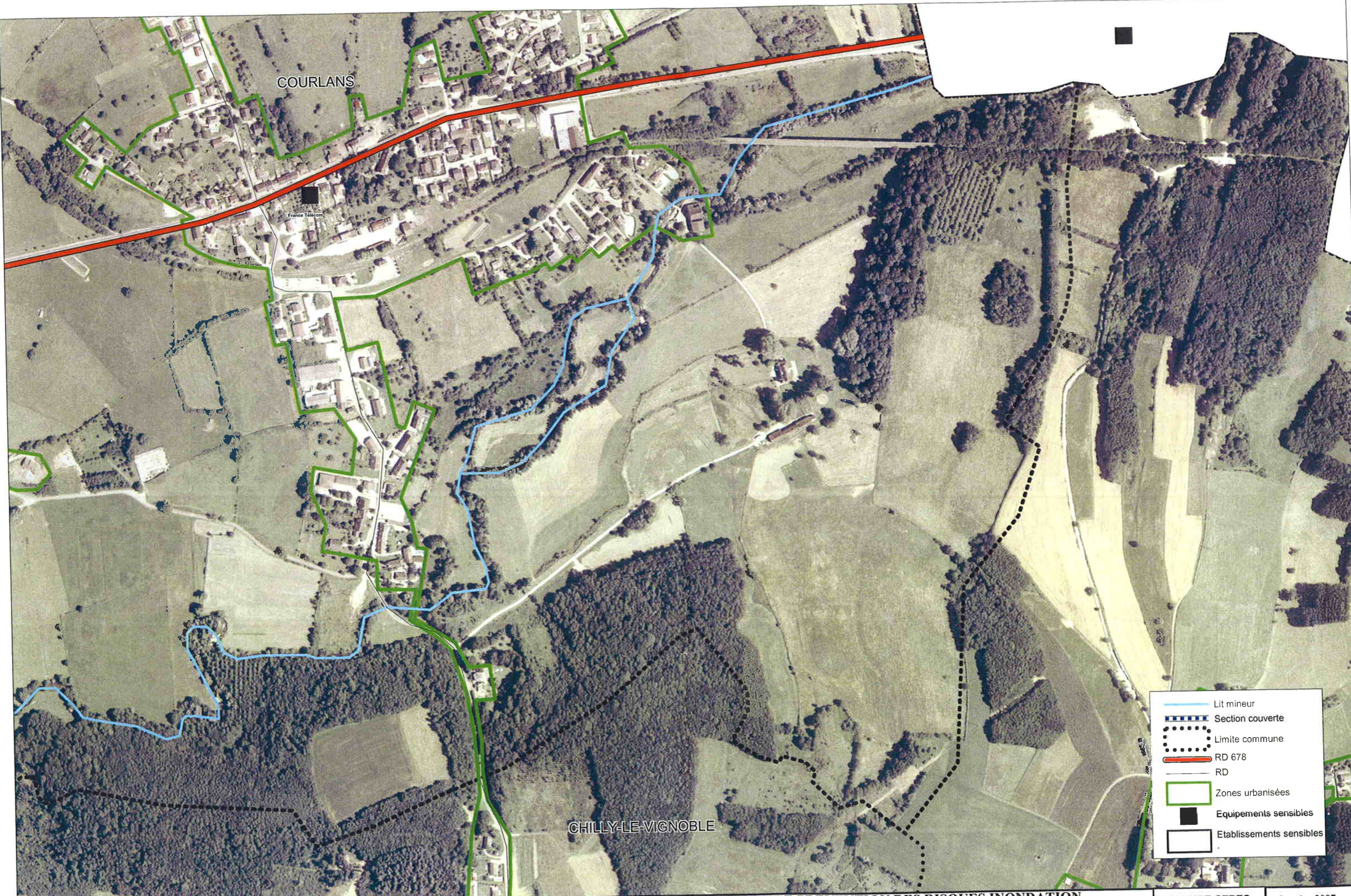
**PLAN DE PREVENTION DES RISQUES INONDATION**  
**de La VALLIERE**  
**CARTE DES ENJEUX**

**BETURE-CEREC**

Janvier 2007

**Planche 07**





COURLANS

France Telecom

CHILLY-LE-VIGNOBLE

- Lit mineur
- Section couverte
- Limite commune
- RD 678
- RD
- Zones urbanisées
- Equipements sensibles
- Etablissements sensibles

Echelle : 1 / 5000



**PLAN DE PREVENTION DES RISQUES INONDATION**  
de La VALLIERE  
**CARTE DES ENJEUX**

**BETURE-CEREC**

Janvier 2007

**Planche 08**





COURLAOUX

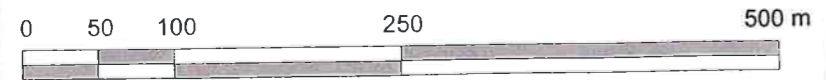
COURLANS

CHILLY-LE-VIGNOBLE

FREBUANS

	Lit mineur
	Section couverte
	Limite commune
	RD 678
	RD
	Zones urbanisées
	Equipements sensibles
	Etablissements sensibles

Echelle : 1 / 5000



Liberté Égalité Fraternité  
REPUBLIQUE FRANÇAISE

Direction  
Départementale  
de l'Équipement  
Jura

**PLAN DE PREVENTION DES RISQUES INONDATION  
de La VALLIERE  
CARTE DES ENJEUX**

**BETURE-CEREC**

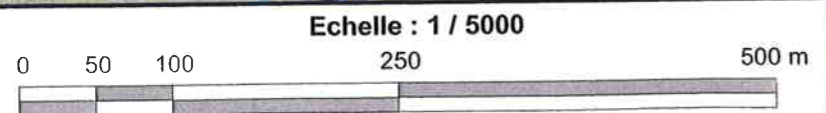
Janvier 2007

**Planche 09**





	Lit mineur
	Section couverte
	Limite commune
	RD 678
	RD
	Zones urbanisées
	Equipements sensibles
	Etablissements sensibles



Direction  
Départementale  
de l'Équipement  
Jura

**PLAN DE PREVENTION DES RISQUES INONDATION**  
de La VALLIERE  
**CARTE DES ENJEUX**

**BETURE-CEREC**

Janvier 2007  
**Planche 10**





- Lit mineur
- Section couverte
- Limite commune
- RD 678
- RD
- Zones urbanisées
- Equipements sensibles
- Etablissements sensibles

Echelle : 1 / 5000



**PLAN DE PREVENTION DES RISQUES INONDATION**  
 de La VALLIERE  
**CARTE DES ENJEUX**

**BETURE-CEREC** Janvier 2007

**Planche 11**