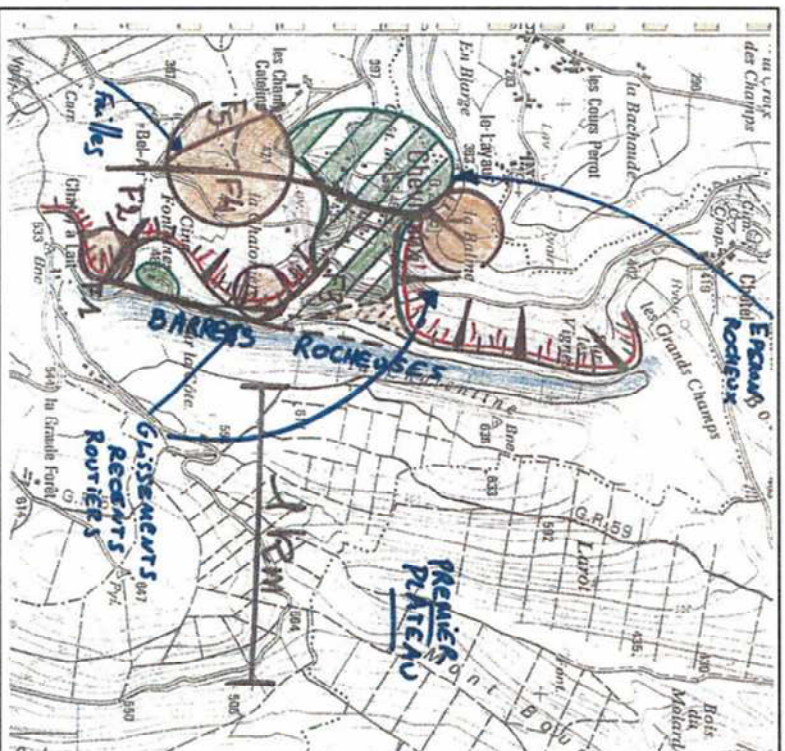


PLAN DE PRÉVENTION DES RISQUES NATURELS PRÉVISIBLES

Risques de mouvements de terrain

CHEVREVAUX

cartes des aléas

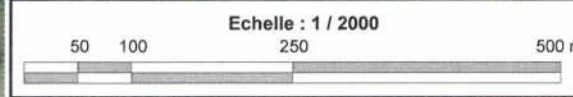
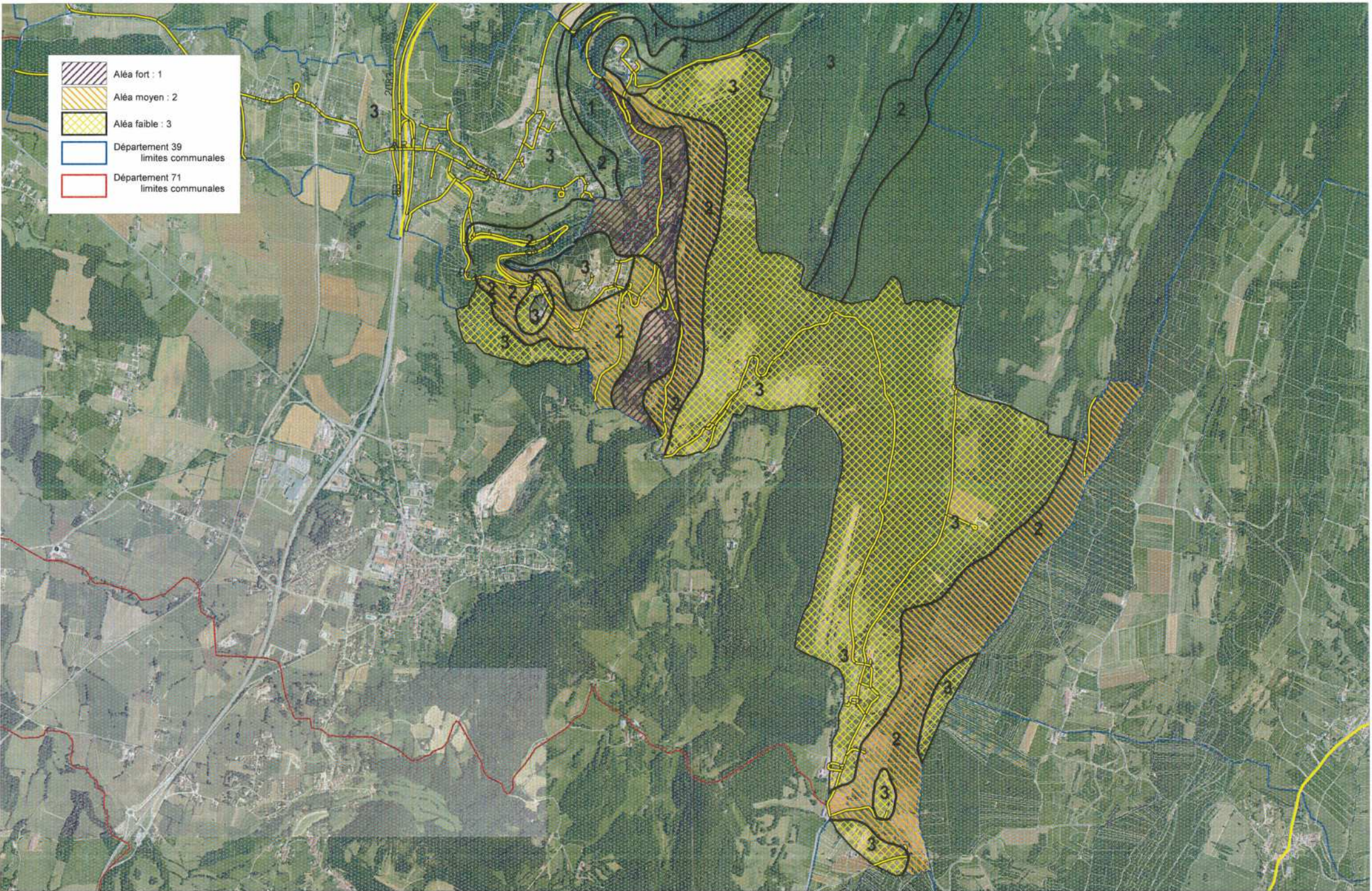
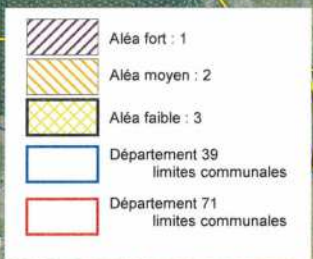


Prescrit le : 18 JANVIER 2008

Mis à l'enquête publique du 12 OCTOBRE 2009 au 13 NOVEMBRE 2009






Approuvé le :

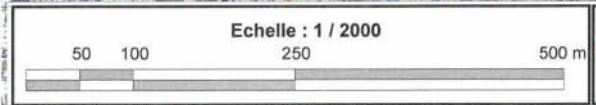
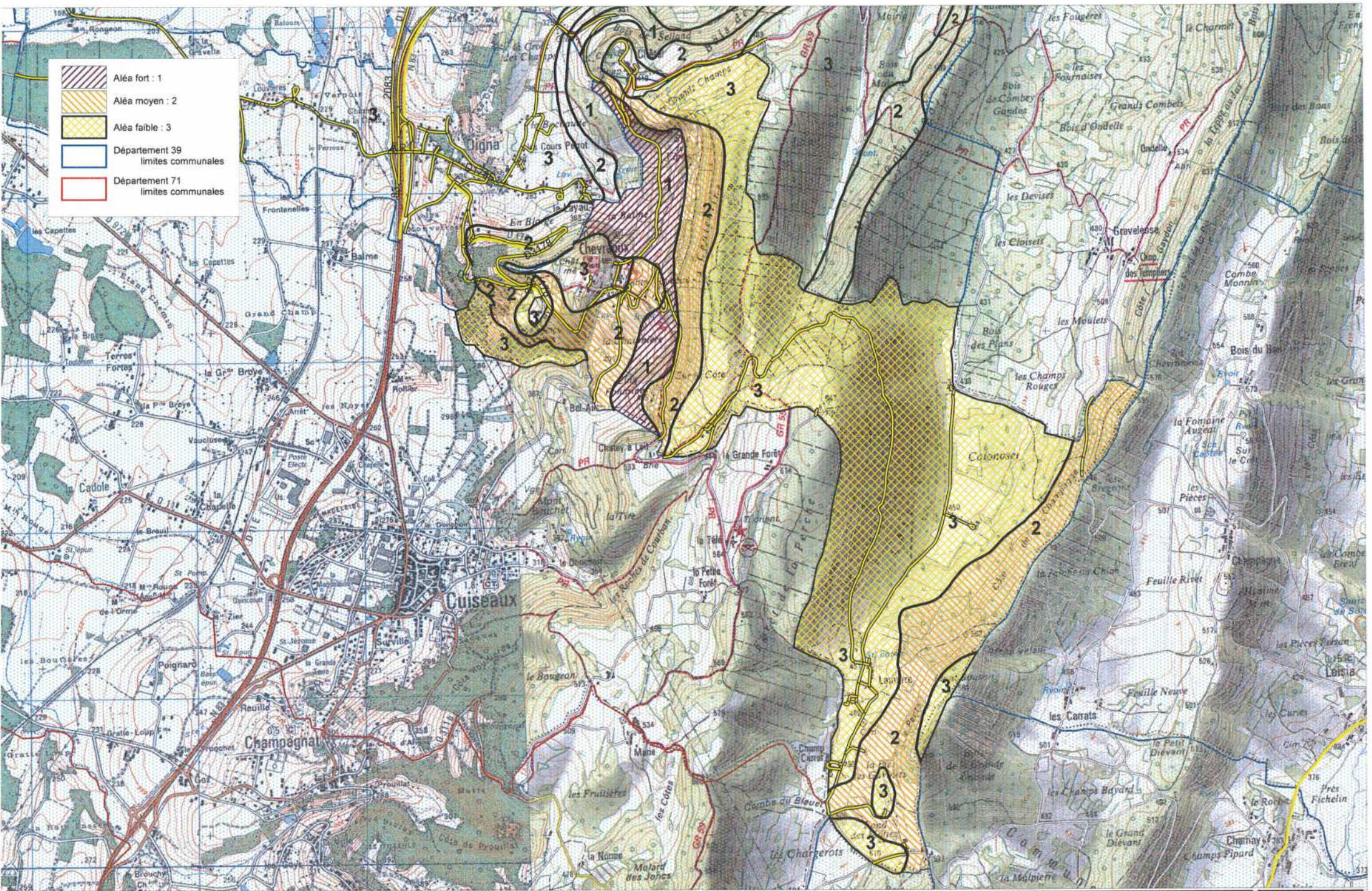
08 FEV. 2010








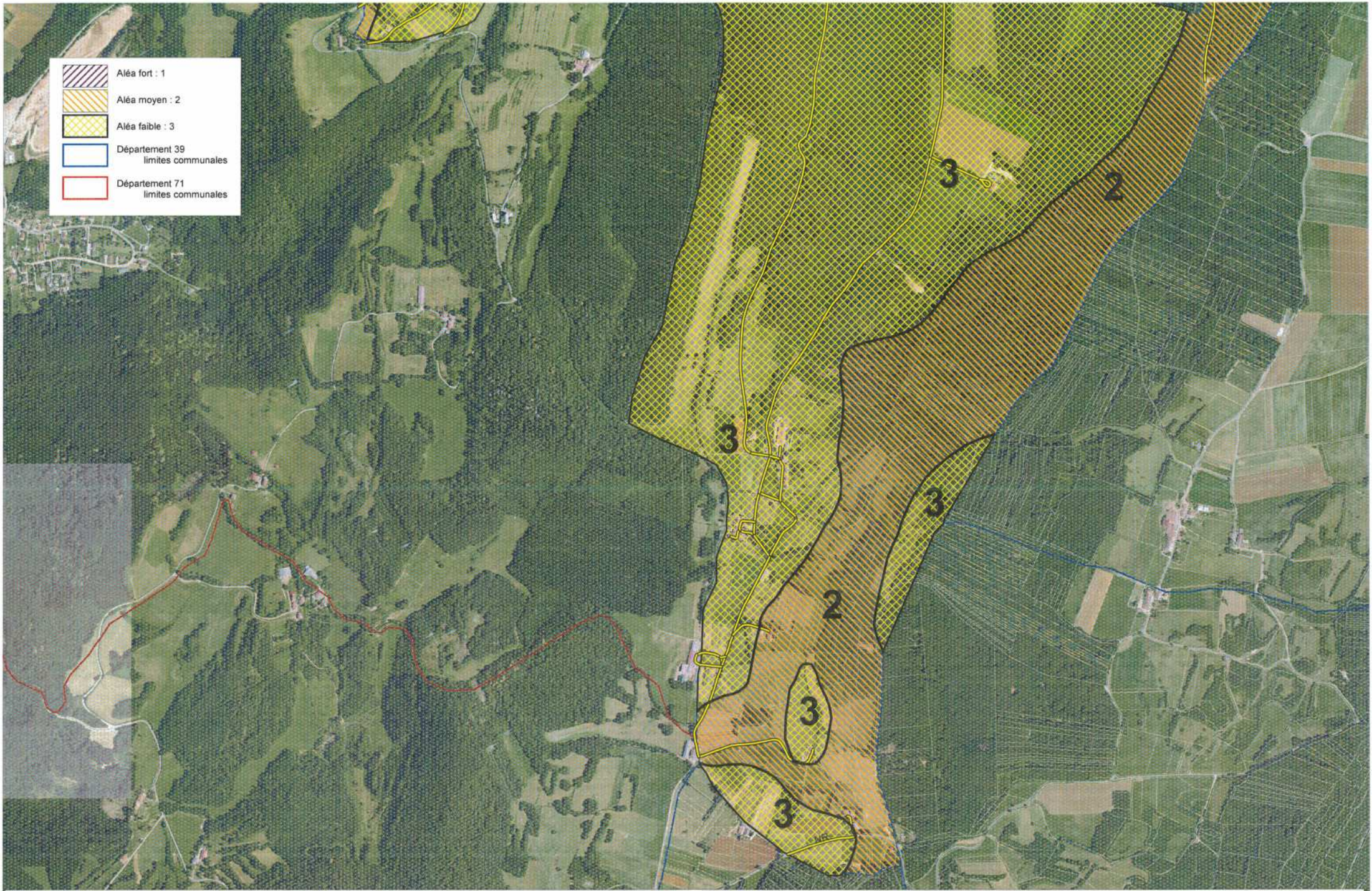
PLAN DE PREVENTION DES RISQUES NATURELS MOUVEMENTS DE TERRAIN
CARTE DES ALEAS (Chevreux)

janvier 2010
01

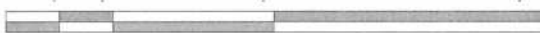
-  Aléa fort : 1
-  Aléa moyen : 2
-  Aléa faible : 3
-  Département 39 limites communales
-  Département 71 limites communales



	Aléa fort : 1
	Aléa moyen : 2
	Aléa faible : 3
	Département 39 limites communales
	Département 71 limites communales



Echelle : 1 / 1000





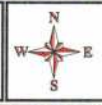
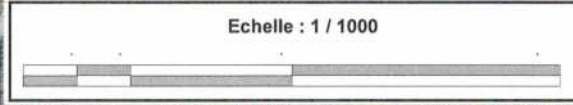
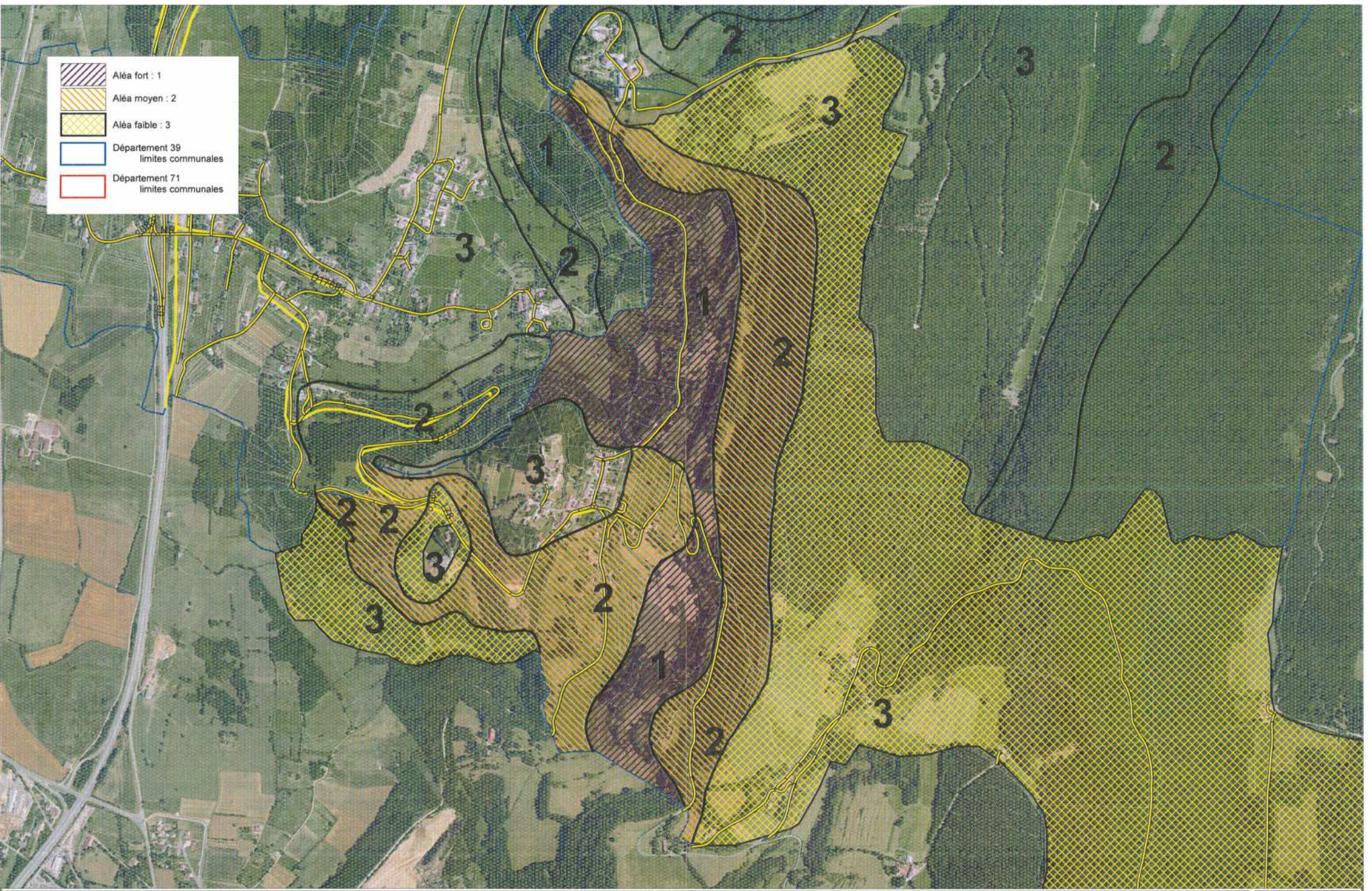
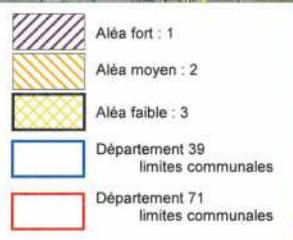
Liberté Égalité Fraternité
REPUBLIQUE FRANÇAISE



Ministère
de l'Écologie, de l'Énergie,
du Développement durable
et de l'Aménagement
du territoire

PLAN DE PREVENTION DES RISQUES NATURELS MOUVEMENTS DE TERRAIN
CARTE DES ALEAS (Lamarre)

janvier 2010
09



PLAN DE PREVENTION DES RISQUES NATURELS MOUVEMENTS DE TERRAIN
CARTE DES ALEAS (Chevreaux)

janvier 2010
12